

# SPC CABLE



7305-SPC1

Automatic judgment by setting tolerance

Automatic sampling Manual sampling

Set auto sample interval and tolerance

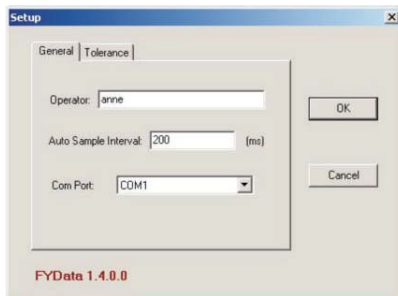
Test result display tolerance, maximum value, minimum value, total quantity of workpiece, quantity of passed and not passed, quantity of exceed upper tolerance and exceed lower tolerance

| NO. | Value | Error | Prompt |
|-----|-------|-------|--------|
| 1   | 7.41  | -0.09 | OK     |
| 2   | 7.62  | 0.12  | OK     |
| 3   | 7.52  | 0.02  | OK     |
| 4   | 7.39  | -0.11 | OK     |
| 5   | 7.26  | -0.24 | OK     |
| 6   | 7.15  | -0.35 | NG-    |
| 7   | 7.82  | 0.32  | NG+    |
| 8   | 7.45  | -0.05 | OK     |

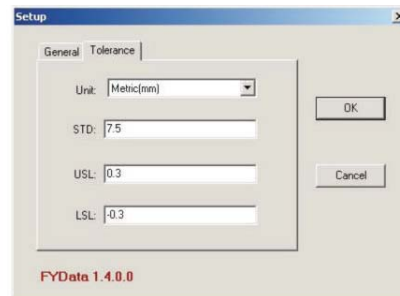
Date: 2012-4-12 Operator: anne

STD: 7.5      AVG: 7.4525  
 P:            TOL: 0.6  
 NUM: 8      OK: 6  
 MAX: 7.82    USL: 0.3  
 MIN: 7.15    LSL: -0.3  
 NG+: 1      NG-: 1

Set auto sample interval



Set tolerance



- Supplied with software
- Voltage required: 5-10V
- Cable length 2.5m

| Code      | Applicable products       |
|-----------|---------------------------|
| 7305-SPC1 | <p>digital indicators</p> |

