

# DIGITAL CAMERA



- Insert into eyepiece tube or camera connector of microscopes
- Supplied with software (page P1)

## SPECIFICATION

Code	ISM-D300B	ISM-D500
Sensor	1/2" CMOS	1/2.5" CMOS
Pixel	3M	5M
Resolution	2048×1536	2592×1944 or 1296×972
Frame rate	6fps	2592×1944 3fps 1296×972 12fps
Exposure	manual or auto, exposure time is adjustable	
SNR	43dB	41dB
Power supply	USB	
Weight	400g	

## STANDARD DELIVERY

Main body	1pc
Adapter 0.45X	1pc
Calibration rule(graduation 0.1mm)	1pc
Connector Ø23.2/Ø30mm	1pc
USB cable	1pc
Software disc	1pc

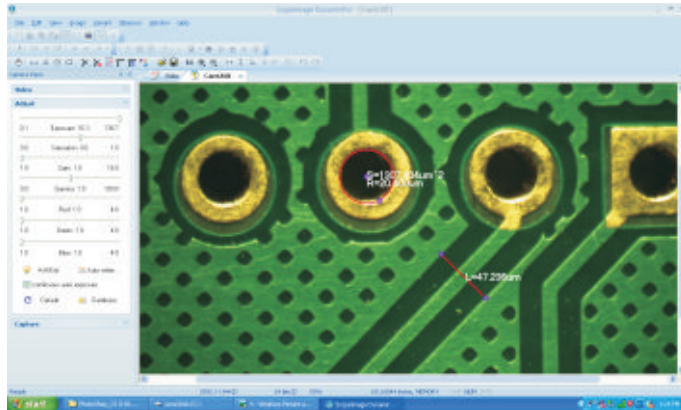
## OPTIONAL ACCESSORY

Adapter 0.28X	ISM-DCA-AD28X
Connector Ø23.2/Ø30.5mm	ISM-DCA-CON

To be continued






Continued from page N13

## SOFTWARE FOR DIGITAL CAMERA



- Can take pictures and videos
- Exposure/gain/gamma/saturation/colour adjustment
- Image process feature: zoom in/out, image flip and so on
- Calibration tool to make measurement in high accuracy

### Measuring Tools:

-  measure distance between two points
-  measure angle with three points
-  measure circle
-  measure rectangle
-  calibration