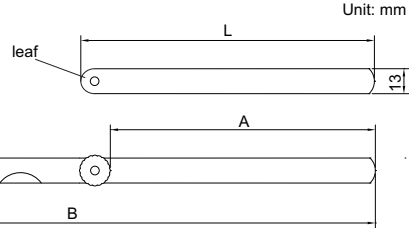


# LONG FEELER GAUGE



4605-20

- Made of hardened alloy steel
- Meet DIN2275
- Accuracy:  $\pm(3+T/80)$   $\mu\text{m}$ , 'T' is the thickness of leaves in  $\mu\text{m}$



(mm)

Code	Range	Thickness of leaves included (mm)	Quantity of leaves	L	A	B
4605-13	0.05 - 1.00mm	0.05, 0.10, 0.15, 0.20, 0.25, 0.30, 0.40, 0.50, 0.60, 0.70, 0.80, 0.90, 1.00	13	150	135	295
4605-131	0.05 - 1.00mm		13	200	185	395
4605-132	0.05 - 1.00mm		13	300	285	590
4605-20	0.05 - 1.00mm	0.05, 0.10, 0.15, 0.20, 0.25, 0.30, 0.35, 0.40, 0.45, 0.50, 0.55, 0.60, 0.65, 0.70, 0.75, 0.80, 0.85, 0.90, 0.95, 1.00	20	150	135	295
4605-201	0.05 - 1.00mm		20	200	185	395
4605-202	0.05 - 1.00mm		20	300	285	590