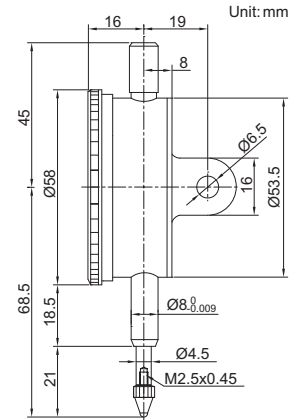


# SHOCKPROOF DIAL INDICATOR



2314-10A

- Shockproof
- Jeweled bearing
- Supplied with limit hands and bezel clamp
- Optional accessory: backs (page F15), contact points (page F11-F14)



Code	Range	Graduation	Accuracy( $f_{ges}$ )	Hysteresis( $f_u$ )	Range/rev	Dial reading	Remark
2314-3A	3mm	0.01mm	14 $\mu$ m	3 $\mu$ m	1mm	0-100	lug back
2314-5A	5mm	0.01mm	16 $\mu$ m	3 $\mu$ m	1mm	0-100	lug back
2314-10A	10mm	0.01mm	20 $\mu$ m	3 $\mu$ m	1mm	0-100	lug back
2314-3FA	3mm	0.01mm	14 $\mu$ m	3 $\mu$ m	1mm	0-100	flat back
2314-5FA	5mm	0.01mm	16 $\mu$ m	3 $\mu$ m	1mm	0-100	flat back
2314-10FA	10mm	0.01mm	20 $\mu$ m	3 $\mu$ m	1mm	0-100	flat back