

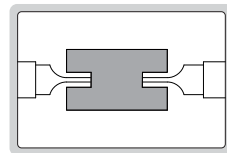
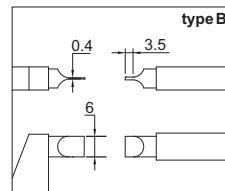
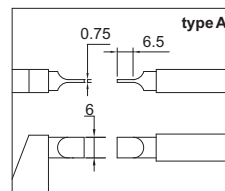
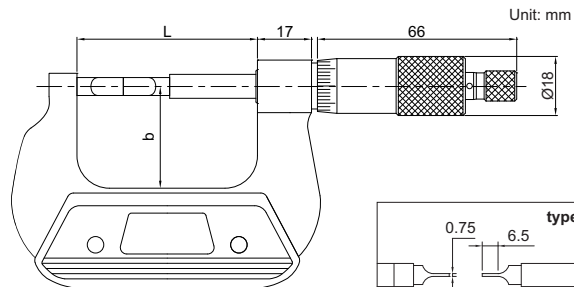
# BLADE MICROMETER



3232-25A

(mm)

| Code      | Range     | Type | Accuracy  | L     | b    |
|-----------|-----------|------|-----------|-------|------|
| 3232-25A  | 0-25mm    | A    | 4 $\mu$ m | 57    | 32   |
| 3232-50A  | 25-50mm   | A    | 4 $\mu$ m | 82    | 44.5 |
| 3232-75A  | 50-75mm   | A    | 5 $\mu$ m | 107   | 57   |
| 3232-100A | 75-100mm  | A    | 5 $\mu$ m | 132.6 | 69.5 |
| 3232-125A | 100-125mm | A    | 6 $\mu$ m | 158   | 82   |
| 3232-150A | 125-150mm | A    | 6 $\mu$ m | 183.4 | 94.5 |
| 3232-175A | 150-175mm | A    | 7 $\mu$ m | 208.8 | 107  |
| 3232-25BA | 0-25mm    | B    | 4 $\mu$ m | 57    | 32   |
| 3232-50BA | 25-50mm   | B    | 4 $\mu$ m | 82    | 44.5 |



- Measure the groove diameter of shafts and keyways
- Graduation 0.01mm
- Non-rotating spindle
- Ratchet stop
- Supplied with setting standards(except 0-25mm)