

# MAGNETIC V BLOCKS

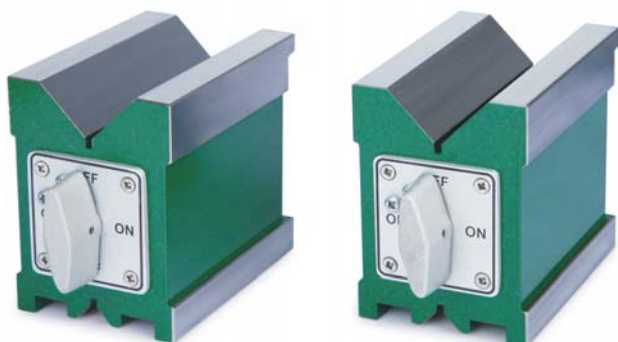
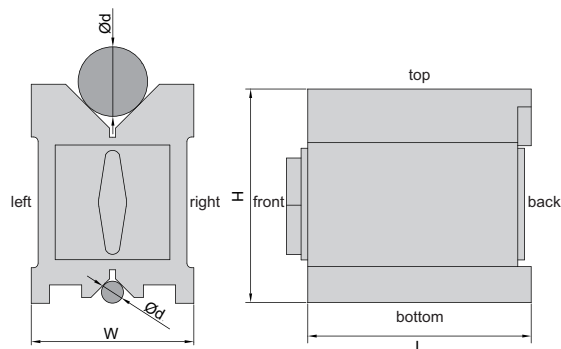
HARDENED SURFACES

HIGH PRECISION

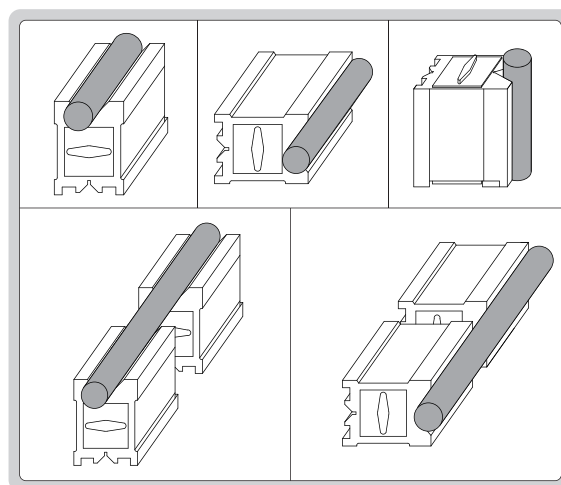
STRONG MAGNETIC FORCE



6889-11



6889-1



- Hardened, high accuracy, strong magnetic force, for grinding, light milling, drilling and inspection of round and square jobs
- All working surfaces are hardened to HRC60±2
- Magnetic force on top, bottom and two V grooves
- V groove on the top for large shafts
- V groove on the bottom for small shafts
- Suitable for cast iron surface plates and granite surface plates

## Individual

Code	Size (LxWxH)	Range of shafts ( $\varnothing d$ )	Magnetic force	Parallelism of V groove to top, bottom, left, right sides	Squareness of V groove to back side
6889-11	75x56x75mm	5 - 40mm	75kgf	5 $\mu$ m	5 $\mu$ m
6889-22	100x70x95mm	5 - 65mm	100kgf	5 $\mu$ m	5 $\mu$ m
6889-33	150x75x100mm	5 - 70mm	125kgf	5 $\mu$ m	5 $\mu$ m

## Matched pair

Code	Size (LxWxH)	Range of shafts ( $\varnothing d$ )	Magnetic force	Parallelism of both V grooves to top, bottom, left, right sides	Squareness of both V grooves to back side	Height difference of a matched pair
6889-1	75x56x75mm	5 - 40mm	75kgf	5 $\mu$ m	5 $\mu$ m	5 $\mu$ m
6889-2	100x70x95mm	5 - 65mm	100kgf	5 $\mu$ m	5 $\mu$ m	5 $\mu$ m
6889-3	150x75x100mm	5 - 70mm	125kgf	5 $\mu$ m	5 $\mu$ m	5 $\mu$ m