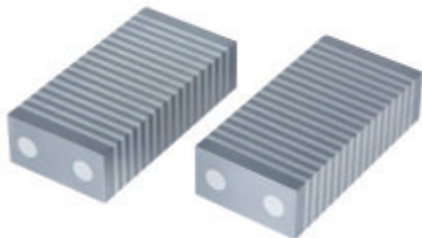
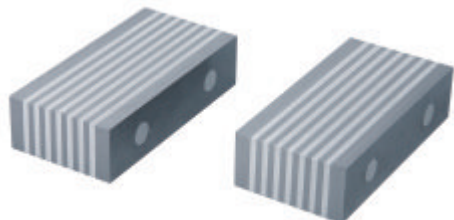


MAGNETIC INDUCTION PARALLEL SET

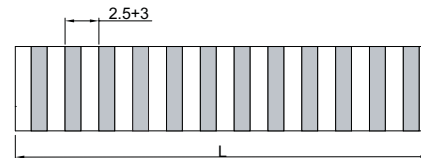
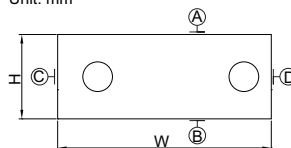


6894-1

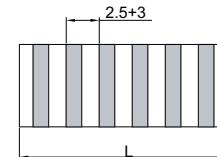
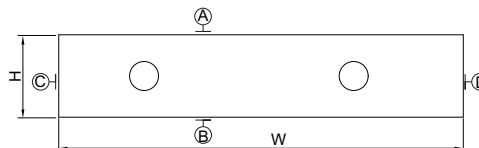


6894-2

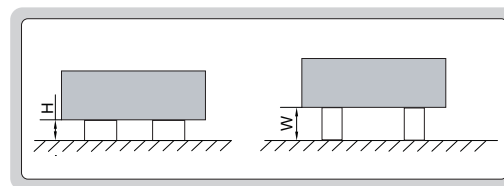
Unit: mm



6894-1



6894-2



- To be used on magnetic chucks
- Two parallels per set

Code	Size(LxWxH)	Pole pitch	Parallelism between A and B	Parallelism between C and D	Height difference of a matched pair
6894-1	100x50x25mm	2.5+3mm	10µm	10µm	10µm
6894-2	50x100x25mm	2.5+3mm	10µm	10µm	10µm